

Installation of Construction Site Erosion and Sediment Control Devices

Melanie McCaleb, CPESC – Soil Science Dept
NC State University

NC STATE UNIVERSITY

DEPARTMENT of SOIL SCIENCE

Porous Baffles



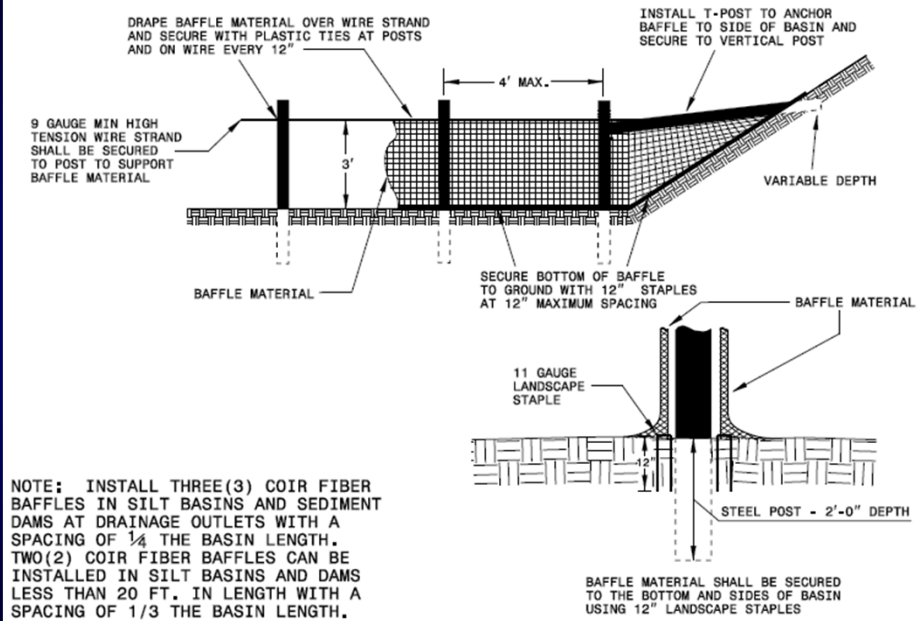
6.65.01

- Used in basins and traps
- Function: Spread concentrated flow over the width of the device; dropping velocity and, therefore, sediment
- Materials:
 - 700 g/m² coir netting
 - T-posts
 - High tensile wire
 - Cable ties (UV resistant)
 - Metal sod staples



NC STATE UNIVERSITY

COIR FIBER BAFFLE DETAIL



NC STATE UNIVERSITY

DEPARTMENT of SOIL SCIENCE

Porous Baffles

- Great success observed when installed properly!

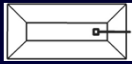


6.65.01



NC STATE UNIVERSITY

DEPARTMENT of SOIL SCIENCE



EC-2B

Skimmer



6.64.01

- Used in basins as a surface outlet
- Function: Dewateres between storms by skimming the 'cleanest' water off surface
- Materials:
 - Skimmer kit



NC STATE UNIVERSITY

DEPARTMENT OF SOIL SCIENCE

Skimmer

- Minimum barrel diameter = 4 inches
- Ensure orifice is sized per plan
 - Example: 4-inch skimmer with 2.5-inch orifice
 - Contractor must insert "knock out plug" with 2.5 inch hole drilled in it



Orifice

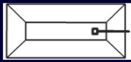


Knock out plug



NC STATE UNIVERSITY

MENT of SOIL SCIENCE

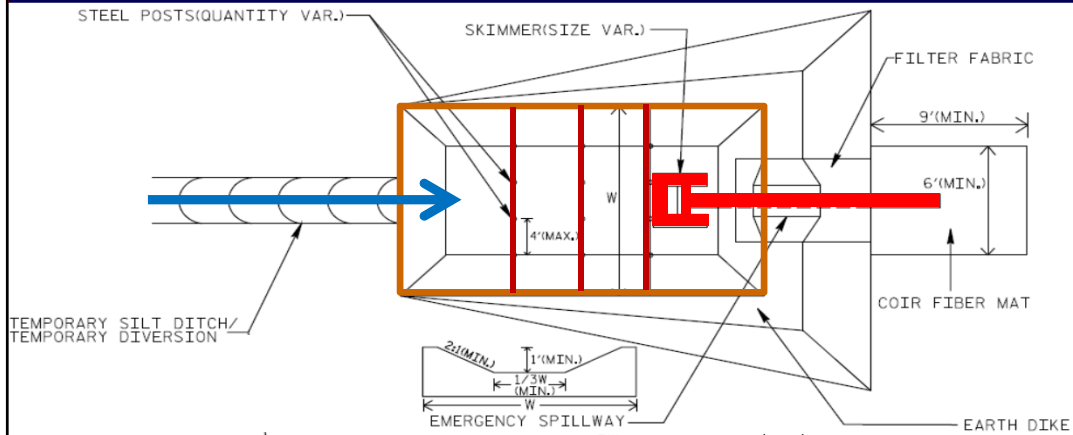


EC-2B

Skimmer Basin with Baffle



6.64.01

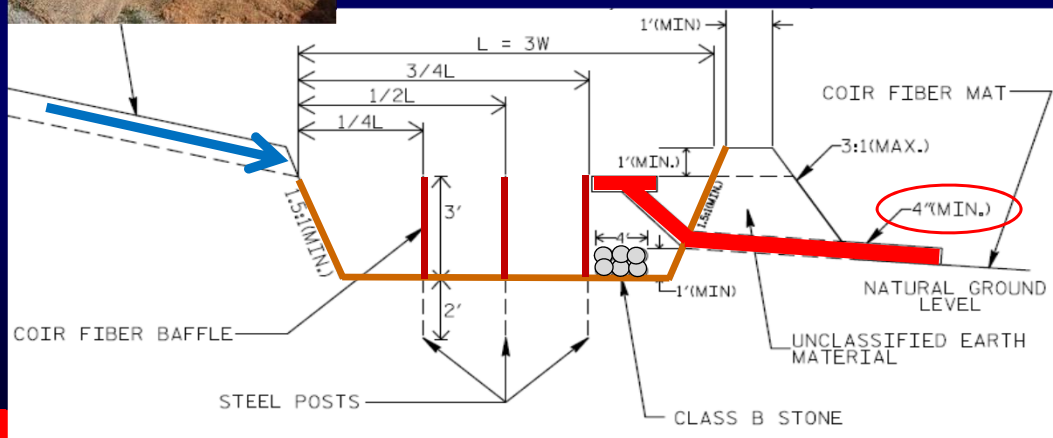


NC STATE UNIVERSITY

DEPARTMENT of SOIL SCIENCE



Skimmer Basin with Baffle

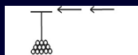


Skimmer Retrieval



NC STATE UNIVERSITY

DEPARTMENT of SOIL SCIENCE



1622.01

Slope Drains



6.32.01

- Used at fill slopes or existing slopes needing protection
- Function: Transport concentrated flow down slope without eroding slope
- Materials:
 - Flexible (single wall) corrugated plastic pipe
 - T-section (optional)
 - Pipe connectors
 - Metal T-posts or wooden stakes
 - Soil (for earthen berm)
 - Class B riprap
 - Sediment Control Stone

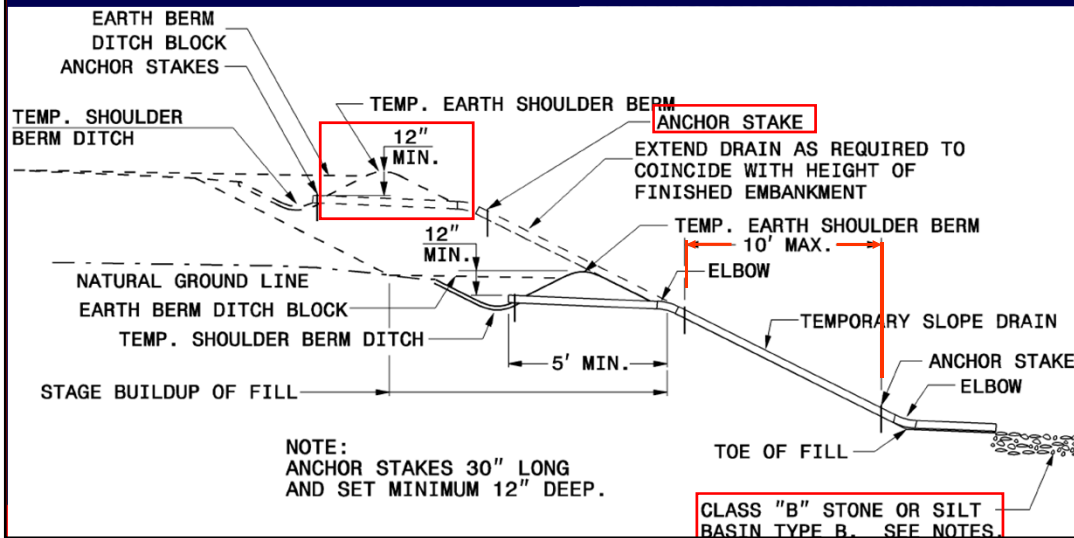


NC STATE UNIVERSITY

DEPARTMENT of SOIL SCIENCE



Temporary Slope Drain with Earthen Berm



Temporary Slope Drain with Earthen Berm



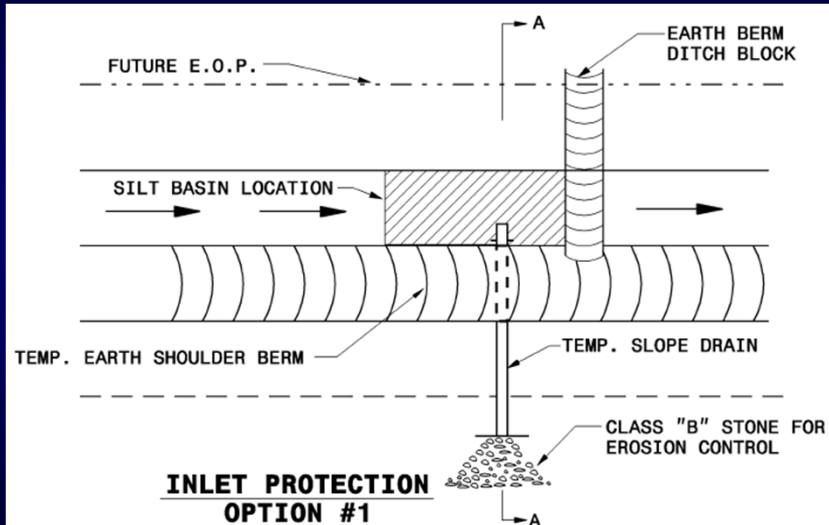
- Anchor stakes placed on 10' max. spacing



NC STATE UNIVERSITY

DEPARTMENT of SOIL SCIENCE

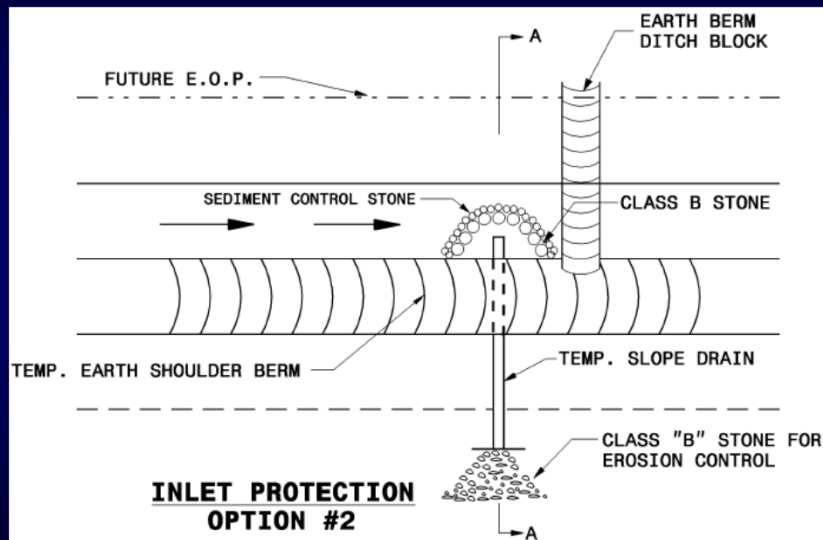
Temporary Slope Drain Inlet Protection Option #1



NC STATE UNIVERSITY

DEPARTMENT of SOIL SCIENCE

Temporary Slope Drain Inlet Protection Option #2



NC STATE UNIVERSITY

DEPARTMENT of SOIL SCIENCE

Temporary Slope Drain Inlet



NC STATE UNIVERSITY



Temporary Slope Drain Outlet

- Problems

- Protect slope drain outlets...outlet must extend to beyond toe of slope



TE UNIVERSITY



Inlet Protection

- Used at Drop Inlets, Curb Inlets and Slope Drain Inlets
- Function: Pool water temporarily to drop out sediment before entering pipe or drop box



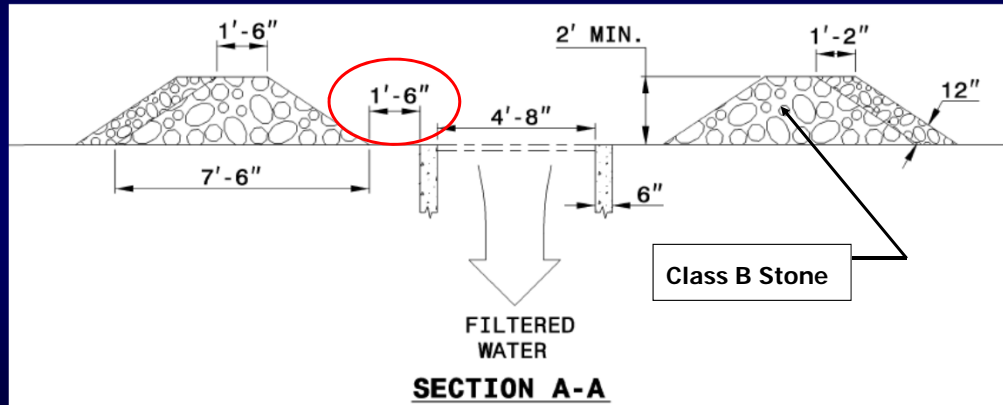
Rock Inlet Sediment Traps – Type A/B

- Stone dam around a drop inlet that receives high flow
- Slows flow creating a pool for settling of sediment

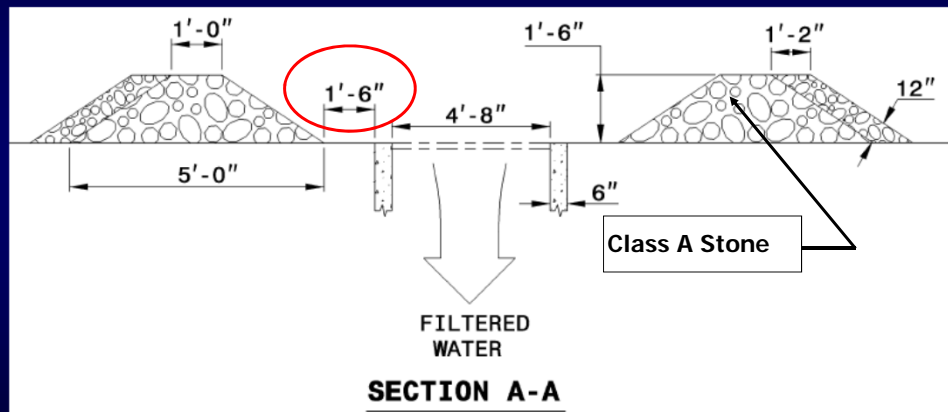


	Type A	Type B
Structure Stone	Class B	Class A
Dam Height (min.)	2 ft	18 inches
Sediment Control Stone (#5 or #57)	yes	yes
Distance from travel lane	>30 ft.	<30 ft.

Rock Inlet Sediment Trap Type A



Rock Inlet Sediment Trap Type B

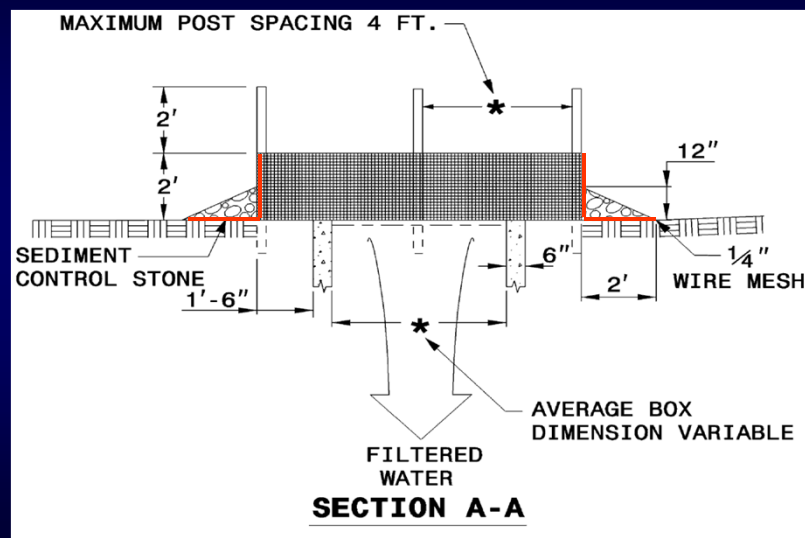


Rock Inlet Sediment Trap Type C

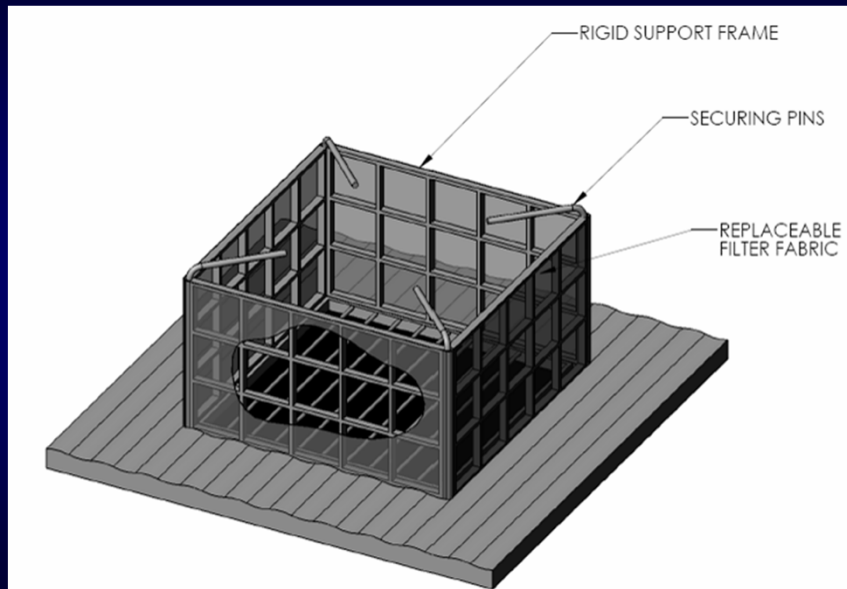
- Small protective structure around an inlet that receives light to moderate flow
- Slows flow creating a pool for settling of sediment
- Materials:
 - T-Posts
 - Hardware Cloth
 - Cable Ties
 - Sediment Control Stone



Rock Inlet Sediment Trap Type C



Drop Inlet Protection-FiltR Fence



NC STAT

ENCE

Curb Inlet Protection



- Made from recycled materials, the Gutterbuddy can be washed and reused
- Flexible enough to conform to any curb radius
- Available in various lengths



DEPARTMENT of SOIL SCIENCE

Curb Inlet Protection

- Problems
 - Keep device from falling into drain!



NC STATE UNIVERSITY

DEPARTMENT of SOIL SCIENCE

Curb Inlet Protection

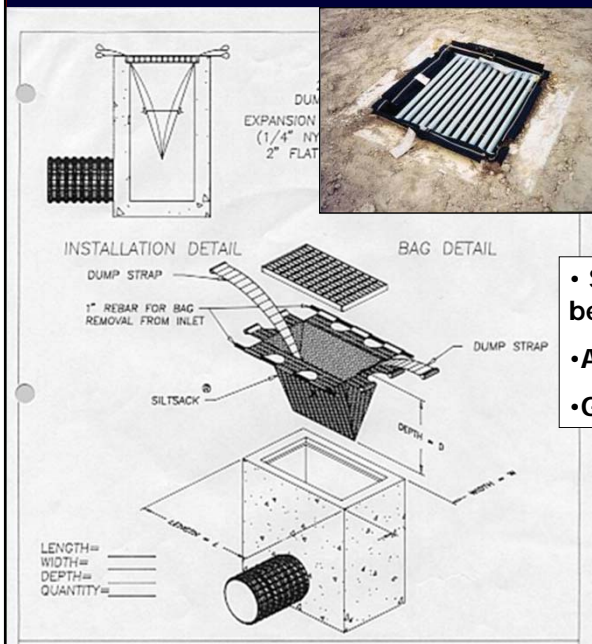
- The GutterGator can be washed and reused
- Rigid inner frame
- Weight pocket to hold in place
- High flow volumes



NC STATE UNIVERSITY

DEPARTMENT of SOIL SCIENCE

Curb Inlet Protection



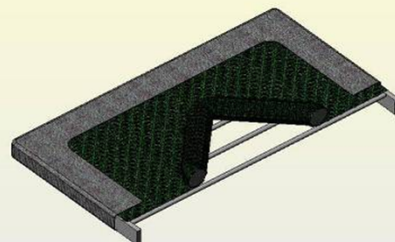
- Silt Sack is a geotextile bag placed below grate
- Attached dump straps
- Grate holds in place

DEPARTMENT of SOIL SCIENCE

GrateGator



- Easily cleaned and reused
- Attaches over grate
- Various sizes



NC STATE UNIVERSITY

DEPARTMENT of SOIL SCIENCE

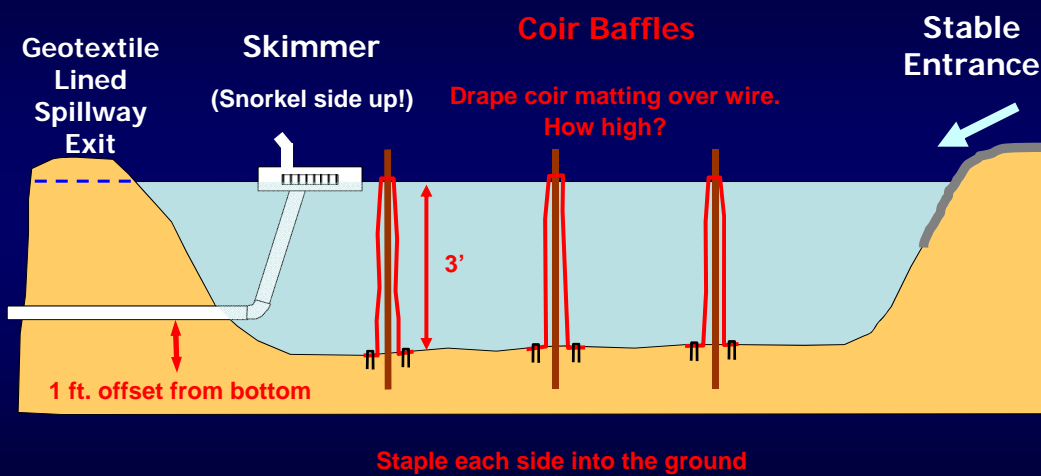
Quick Review!

Quick Review!

NC STATE UNIVERSITY

DEPARTMENT of SOIL SCIENCE

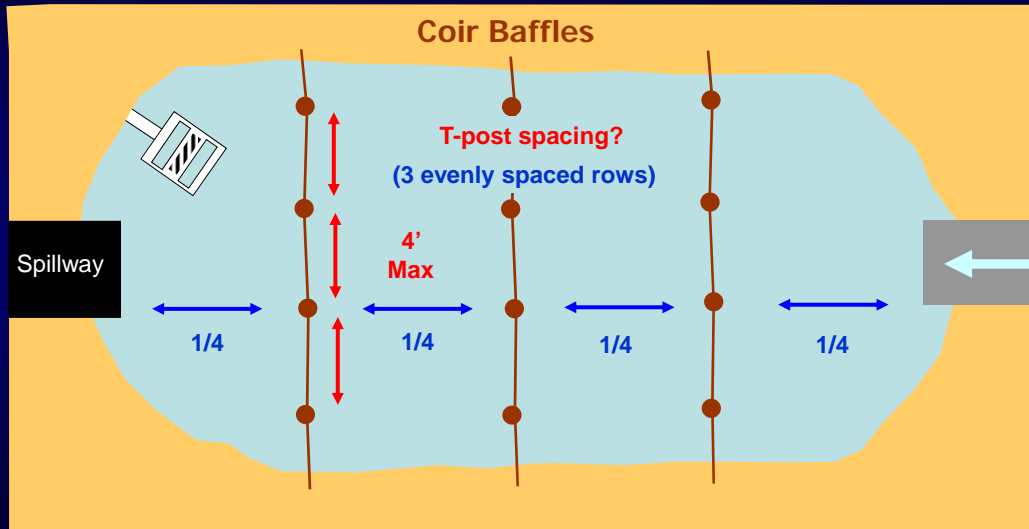
Skimmer Basin with Baffles



NC STATE UNIVERSITY

DEPARTMENT of SOIL SCIENCE

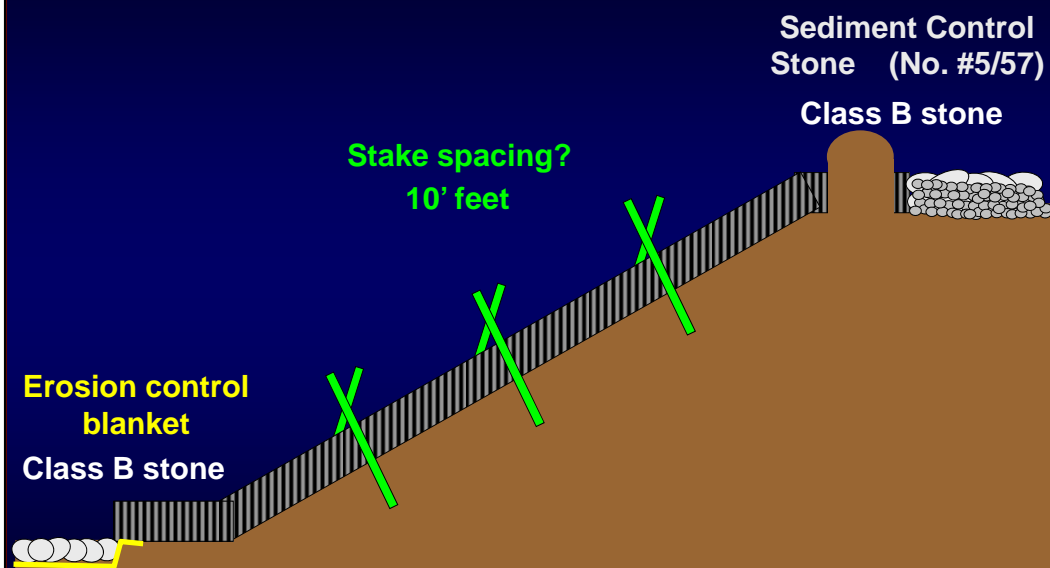
Skimmer Basin with Baffles



NC STATE UNIVERSITY

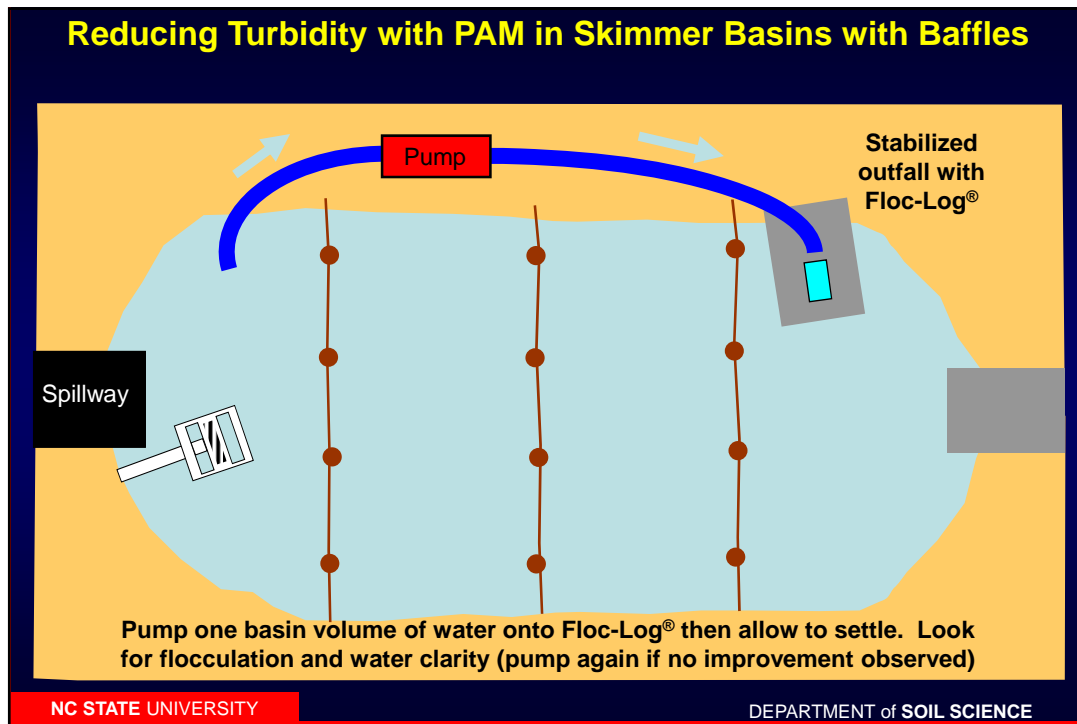
DEPARTMENT of SOIL SCIENCE

Slope Drains with Inlet Protection



NC STATE UNIVERSITY

DEPARTMENT of SOIL SCIENCE



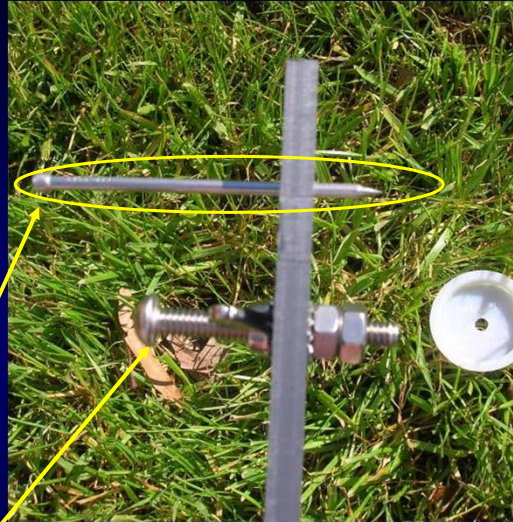
Any Questions?

Skimmer- Cutting the Orifice



Cutter
(provided)

Cutting
mechanism
-sharp nail!



Attach cutter to pre-drilled
hole in knock-out plug
using screw and nuts

NC STATE UNIVERSITY

DEPARTMENT of SOIL SCIENCE

Skimmer- Replacing the Plug



Screw eye

-After cutting appropriate
orifice diameter, place
knock-out plug back in
orifice

-Tighten screw to hold plug
in place

-Close aluminum screen
door and tighten screw eye



NC STATE UNIVERSITY